

# INSTRUMENTS

An integral part of your daily routine, you need the quality and range of instruments to ensure you can deliver the best result for your patient. Gunz Dental brings you an extensive range from some of the world's leading manufacturers including Premier, Sword and Safico.

For all your Instrument needs Talk To Us.



## SECTION 10

# INSTRUMENTS

## CONTENTS

### ACCESSORIES

BRITE SHIELD CLEANER	163
D.I.S.C. INSTRUMENT SHARPENER	163
INSTRUMENT RINGS	163
INSTRUMENT TRAYS	163
INSTRUMENT CASSETTES	163
STERILISING TRAY	163

### DIAGNOSTIC

EXPLORERS	164
PERIOWISE/PERIO PROBES	165

### HYGIENE

TWEEZERS	166
MIRROR HANDLES	166
MIRROR HEADS	166
PHOTOGRAPHIC MIRRORS	166
BIG EASY INSTRUMENTS	167
SCALERS	167
CURETTES	168-170
SLIX™	170-171
IMPLANT SCALERS	171

### OPERATIVE

CAVITY PREPARATION	172
EXCAVATORS	172
PLUGGERS	172-173
CARVERS	173
BURNISHERS	173
PLASTIC FILLING INSTRUMENTS	174
COMPOSITE FILLING INSTRUMENTS	174
APPLICATORS	174
AMALGAM CARRIERS	175
CORD PACKERS	175

### OPERATIVE/LABORATORY

CROWN REMOVER	176
CEMENT SPATULAS	176
WAX SPATULAS	176
WAX INSTRUMENTS	176
WAX CARVERS	176
PLASTER KNIFE	177
PUNCHES & FORCEPS	177

### OPERATIVE/ENDODONTIC

PUNCHES & FORCEPS	177
EXPLORERS	177
EXCAVATORS	177
GLICKS	177
SPREADERS	177
NiTi SPREADERS	178
PLUGGERS	178
MACHTOU PLUGGERS	178

### SURGICAL

EJECTORS	179
TONGUE DEPRESSOR	179
HAEMOSTATIC	179
ELEVATORS	179-180
FORCEPS	180-181
NEEDLE HOLDERS	181
SCISSORS	181

## ACCESSORIES

**Brite Shield™ Cleaner**

PREMIER

Suitable for use as a static soak or ultrasonic cleaner. Removes light stains, all resins and cements and protects against rust and corrosion. Brings instruments back to a glorious lustre.

800gm Jar with scoop dispenser

PRE11100

**D.I.S.C. Instrument Sharpener**

PREMIER

Quickly sharpen scalars and curettes correctly without damaging the cutting surface.

D.I.S.C. Instrument sharpener

PRE48200

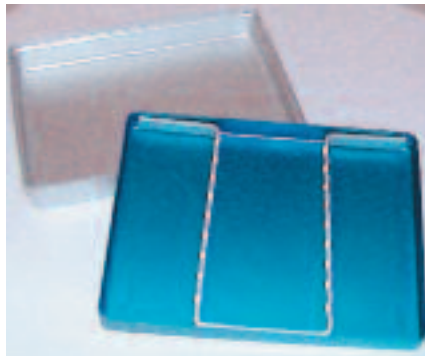
**Instrument Rings**

PROGRESS

Colour coded instrument rings. Assorted packs of 225.

Instrument rings

PRO250

**Instrument Trays**

PROGRESS

Colour coded to save you time by allowing you to organise your instruments for certain procedures. Made from highest quality anodised aluminium produced to ISO standards. These trays are also light weight, durable and fully autoclaveable.

Mini Instrument Tray, Blue (complete with rack &amp; lid)

PRO853



Mini Instrument Tray, Green (complete with rck &amp; lid)

PRO854



Rack for Mini Trays

PRO857



Instrument Tray, Grey perforated (complete with rack &amp; lid)

PRO844



Instrument Tray, Blue perforated (complete with rack &amp; lid)

PRO847



Instrument Tray, Green perforated (complete with rack &amp; lid)

PRO848



Rack for Large Trays

PRO856

**Instrument Cassettes**

PREMIER

Unique, hingeless design offers years of trouble-free operation. Compact, double stack feature fits more instruments for greater efficiency in ultrasonic cleaning, autoclaving and storage. Includes a 5 year satisfaction guarantee.

Mark I (4 or 8 Instruments) 2.5"x8.5"x1.5"

PRE9010904



Mark VI (8 or 16 Instruments) 4.5"x8.0"x1.25"

PRE9010908



Mark IV (12 or 24 Instruments) 8.0"x11"x1.50"

PRE9010924



Accessory Cassette 1.5"x3.5"x1.0"

PRE9010901

**Sterilising Tray**

PD

These trays are made of anodised aluminium in grey with perforated lids. Size 251mm x 108mm.

Size 2

PDSTP2



EXPLORERS



Explorer #2 DE

PRE3522



Explorer OCT #2 DE

PRE3502



Explorer #2 CH DE



PRE3528



Explorer #3 CH DE



PRE3527



Explorer CF #5 DE

PRE3523



Explorer OCT #5 E

PRE3503



Explorer 6 DE

PRE3526



Explorer OCT #6/23 DE

PRE3506



Explorer #6 SE



PRE3512



Explorer #6L SE



PRE3513



Explorer #23 SE



PRE3515



23 Sickle SE



SW03007/23

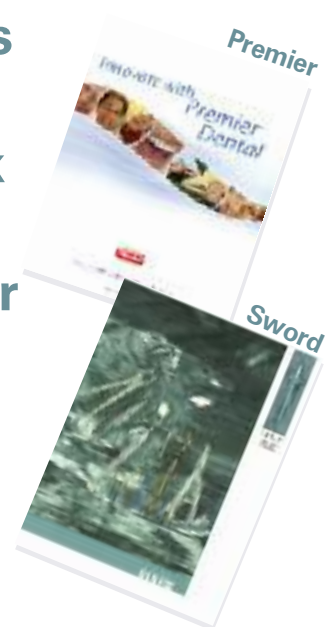


23 Sickle SE

SW03015/23



For more details on our range of instruments ask your Gunz rep for a copy of our manufacturers' catalogues.



PREMIER - PERIOWISE/PERIO PROBES

**Premier PerioWise® "The Friendly Probe®"**

- Ideal for full examination or a quick screening
- Easy-to-read 3mm green band indicates periodontal health
- Reaching a red mark indicates the presence of periodontal disease
- Safe around implants
- Autoclavable

A new and accurate screening system, visit [www.periowise.com](http://www.periowise.com)

**FREE screening system components available from Premier!**

"Most Highly Rated"\*\*\*



PerioWise (3-5-7-10mm) Pack 3  
PRE6107

PerioWise (3-6-9-12mm) Pack 3  
PRE6108



PerioWise – UNC 12 (1-2-3-4-5-6-7-8-9-10mm) Pack 3  
PRE6120



Goldman-Fox Perio Probe (1-2-3-5-7-8-9-10mm)



PRE3671



Williams CC (1-2-3-5-7-8-9-10mm)  
PRE3668  
Williams (1-2-3-5-7-8-9-10mm)  
PRE3672

Michigan O (3-6-8-10mm)



PRE3673

Michigan S (1-2-3-5-7-8-9-10mm)



PRE3674

WHO (3.5-5.5-8.5-11.5mm)



PRE3675

Probex CC (3-6-8-10mm)

PRE3681

Probex (3-6-8-10mm)

PRE3680

Probex Williams CC (1-2-3-5-7-8-9-10mm)

PRE3688

Probex Williams (1-2-3-5-7-8-9-10mm)

PRE3682

CC Probex YO 9 DE (3-6-9-12mm)

PRE3689

Probex WHO/23 (3.5-5.5-8.5-11.5mm)

PRE3690

**TWEEZERS**



**SAFICO**

College  
SAF219/01  
Locking  
SAF227/2



**SWORD**

College Serrated  
SWO2881  
College Serrated  
SWO2883  
College Serrated  
SWO2885



Plugging  
SWO2908



Meriam Serrated  
SWO2943



**PREMIER**

College  
PRE65081

*For a full selection of hygiene instruments please contact your Gunz Dental sales representative or customer service.*

**MIRROR HANDLES**

**SWORD**

Premium German design that is light weight and offers a tapered neck for greater access.

18/8  
SWO2782

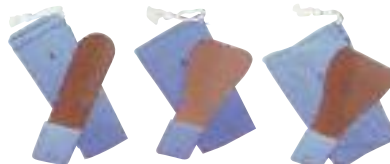
Economy  
SWO2786/1

**PREMIER**

Simple Stem with Big Easy Handle.

PRE5120

**PHOTOGRAPHIC MIRRORS**



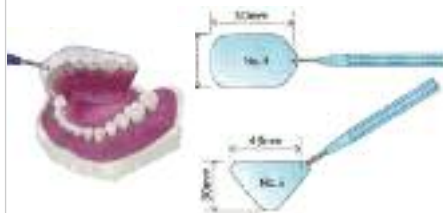
Buccal #1    Child #2    Adult #3

**Big Oral/Photographic Mirror**

**DENTECH**

Stainless steel mirror with rhodium coating for excellent reflection efficiency and colour reproduction. Handle made of silicone rubber. Autoclavable.

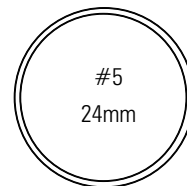
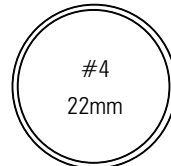
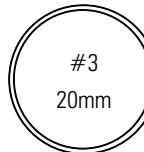
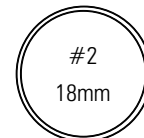
Adult #3  
DENPM3A  
Buccal #1  
DENPM1B  
Child #2  
DENPM2C  
Set of 3 mirrors  
DENPM3



**Rhodium Coated Lingual Mouth Mirrors**

Big Oral Photographic Mirror Lingual view small #4  
DENTPM4  
Big Oral Photographic Mirror Lingual view small #5  
DENTPM5

**MIRROR HEADS**



Stainless steel design with silicone edging make these heads durable and water tight.

**Standard Plane - PROGRESS**

#2    Pack 12  
PRO302  
#3    Pack 12  
PRO303  
#4    Pack 12  
PRO304  
#5    Pack 12  
PRO305

**Front Surface - PROGRESS**

#2    Pack 6  
PRO312  
#3    Pack 12  
PRO313/DOZ  
#4    Pack 12  
PRO314/DOZ  
#5    Pack 12  
PRO315/DOZ

PREMIER – BIG EASY™



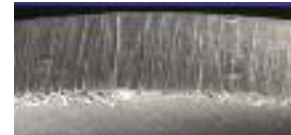
Premier SmartSharp™ Technology

Premier's innovation in sharpening technology allows you to start sharp and work smart!

- Easily maintain sharpness: Proprietary process ensures a well defined edge you can easily re-sharpen as needed - to maintain efficiency
- Apply less pressure and use fewer strokes: Achieve a glass-like tooth surface - more easily
- SmartSharp™ technology is now standard: On all Premier Big Easy UltraLite Scalers & Curettes.



A sharp edge ensures a smooth, precise cut with less hand fatigue.



An irregular edge is less efficient and can lead to more hand fatigue.



Premier® Instrument Edge



Leading Competitor Edge

Ergonomic, comfort-controlled instruments; Big Easy® scalars and curettes with thicker, softer grips for better control



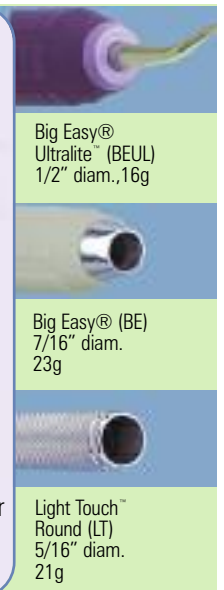
Big Easy® Ultralite™ (BEUL)  
Up to 30% lighter than other instruments

Advanced technology polymer handle with medical-grade silicone grips offers exceptional lightness and durability on the largest available handle (1/2" diameter) to reduce fatigue.



Big Easy®\* (BE) Hollow Handle Stainless Steel

A light-weight stainless steel hollow handle under medical-grade silicone grips for improved tactile sensitivity and outstanding durability.



PREMIER – SCALERS

Sickle



Sickle H6/H7

(BE) PRE5040

(BEUL) PRE5621

(LT) PRE4847

Distal



H-204 SD Distal

(BE) PRE5055

(BEUL) PRE5627

(LT) PRE4847

PREMIER – CURETTES

Columbia



Columbia 4L/4R

(BE) PRE5030 (BEUL) PRE5615 (LT) PRE4801



Columbia 2L/2R

(BE) PRE5028 (LT) PRE4800



Columbia 13/14

(BE) PRE5035 (BEUL) PRE5617 (LT) PRE4802

Gracey



Gracey 1/2 - Short shank for incisors and cuspids.

(BE) PRE5001 (BEUL) PRE5601 (LT) PRE4810



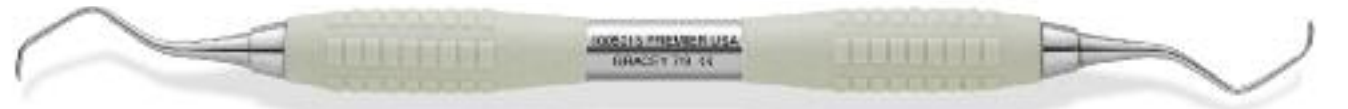
Gracey 3/4 - Short contra-angle shank for incisors and cuspids.

(BE) PRE5005 (BEUL) PRE5603 (LT) PRE4811



Gracey 5/6 - Medium shank for cuspids and molars.

(BE) PRE5010 (BEUL) PRE5605 (LT) PRE4812



Gracey 7/8 - Medium contra-angle shank for bicuspid and molars, buccal and lingual surfaces.

(BE) PRE5015 (BEUL) PRE5607 (LT) PRE4813



Gracey 9/10 - Long contra-angled for molars with more acute blade angle.

(BE) PRE5018 (BEUL) PRE5609 (LT) PRE4814

*For a full selection of hygiene instruments please contact your Gunz Dental sales representative or customer service.*

PREMIER – CURETTES

Gracey



Gracey 11/12 - Triple angulation for easy access to buccal/mesial and the lingual/mesial surfaces of premolars and molars.

(BE) PRE5020  (BEUL) PRE5611  (LT) PRE4815 



Gracey 13/14 - Triple angulation for easy access to distal/posterior surfaces of premolars and molars.

(BE) PRE5025  (BEUL) PRE5613  (LT) PRE4816 

McCall



McCall 13S/14S

(BE) PRE5085  (BEUL) PRE5639  (LT) PRE4821 



McCall 17/18

(BE) PRE5085  (BEUL) PRE5637  (LT) PRE4824 



McCall 175/185

(BE) PRE5090  (BEUL) PRE5641  (LT) PRE4822 

Pocket Scalers



PS 1/2

(BEUL) PRE5660 



PS 3/4

(BEUL) PRE5661 



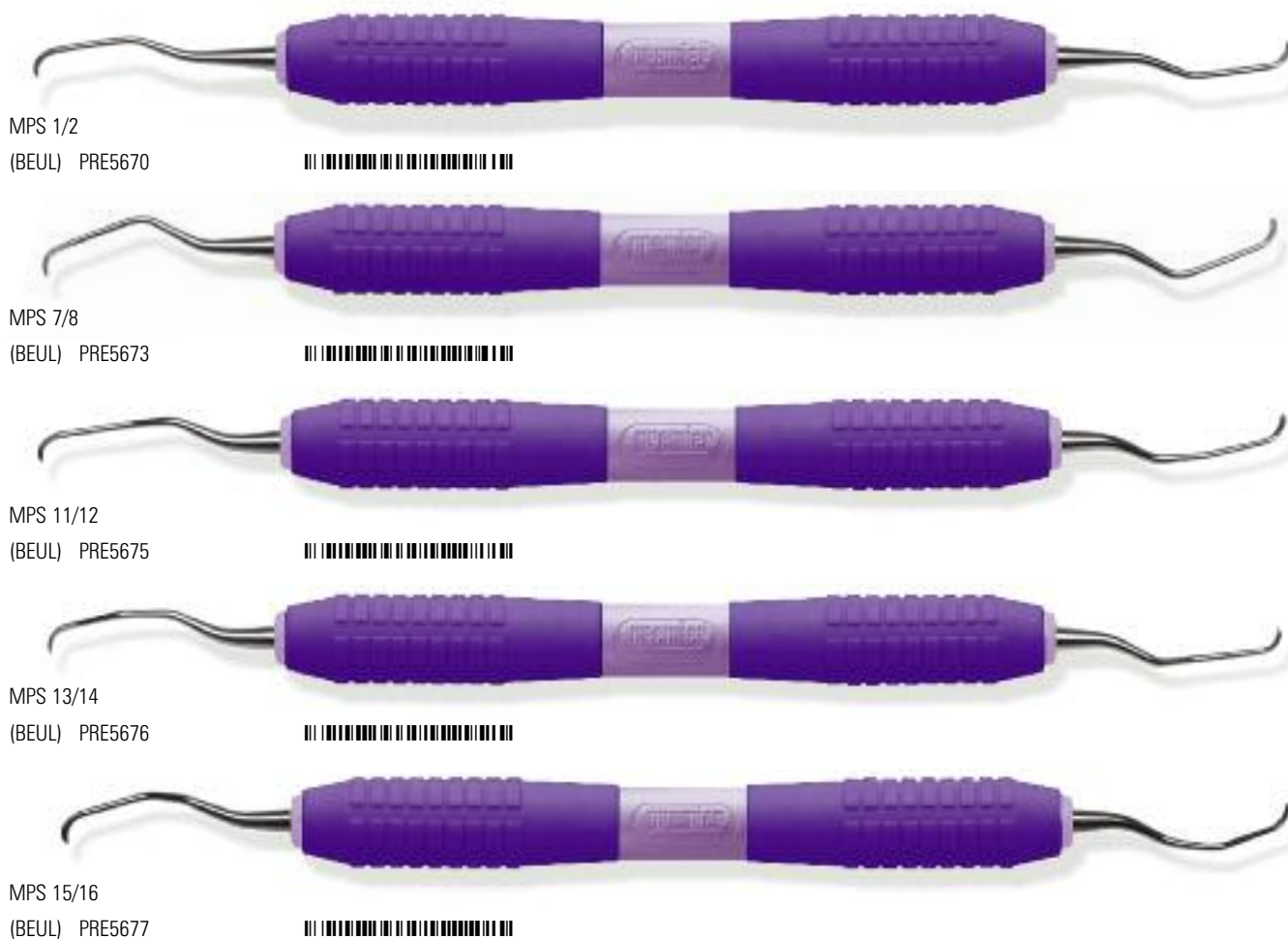
PS 7/8

(BEUL) PRE5663 

*For a full selection of hygiene instruments please contact your Gunz Dental sales representative or customer service.*

PREMIER – CURETTES

Mini Pocket Scalers

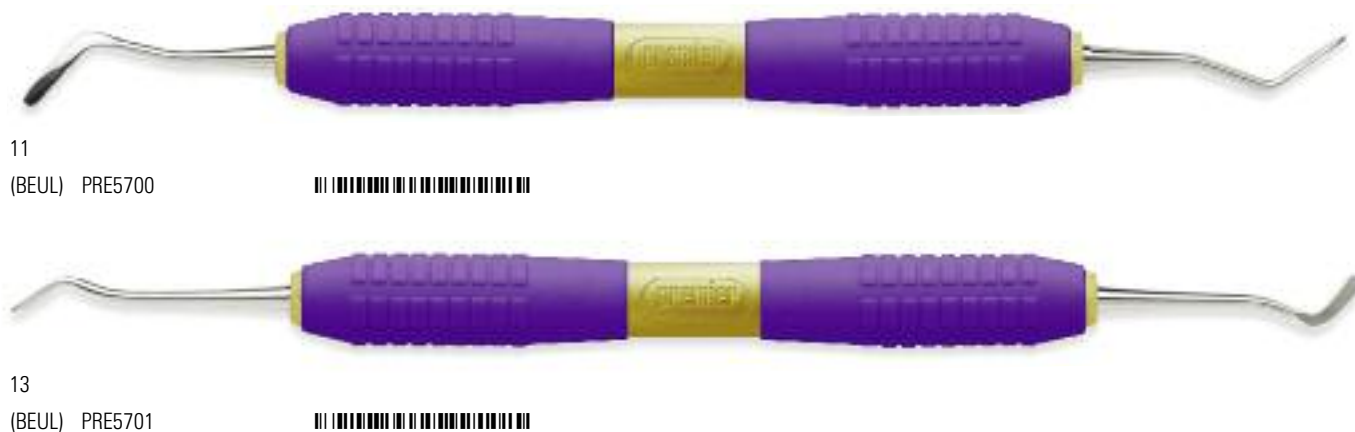


*For a full selection of hygiene instruments please contact your Gunz Dental sales representative or customer service.*

PREMIER – SLIX™

Composite Manipulation Instruments

The tips are treated with a revolutionary protective coating that provides superior non-stick properties and a lustrous surface for long lasting esthetic appearance. No more composite sticking; dentists appreciate the easy placement and fast clean-up! The ergonomic handles are manufactured from an advance technology polymer with medical-grade silicone grips. "Surprisingly light"-only 16g - on the largest available handle (1/2" (1.27 cm) diameter) to reduce hand fatigue.



PREMIER – SLIX™



IMPLANT SCALERS

Implant Scalers  
PREMIER

Made of revolutionary material which is engineered to be sharper, yet safe enough to use on Titanium Implants. Autoclavable and can be re-sharpened.

Implant Scaler Universal (Columbia 4L/4R)

PRE61401



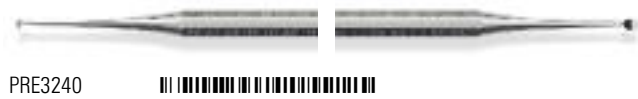
Implant Facial Scaler (Golman-Fox 5) Pack

PRE61402

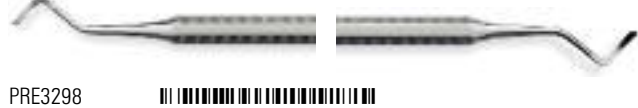


CAVITY PREPARATION

Carver – discoid/cleoid Black 89/92 DE



Margin Trimmer – California 28

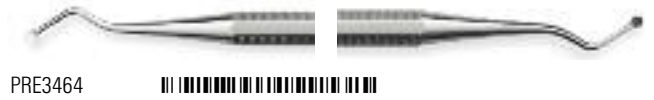


California 29

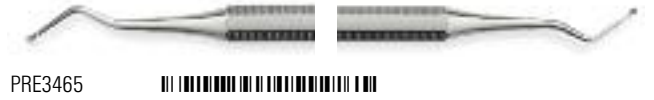


EXCAVATORS

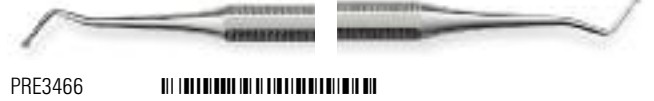
129/130 DE



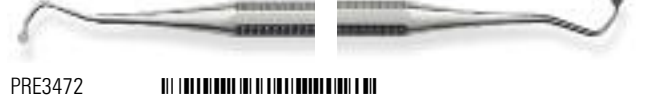
133/134 DE



153/154 DE

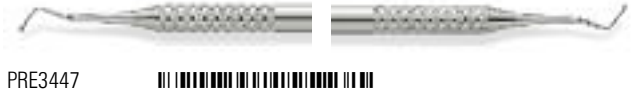


245 DE

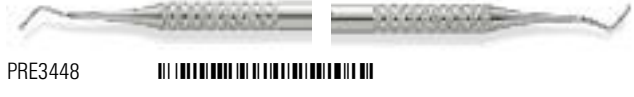


EXCAVATORS

12 DE



TB 13 DE



TB 14 DE



TB 15 DE



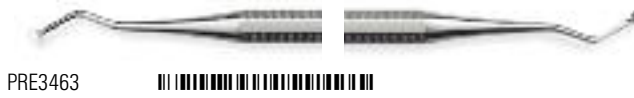
125/126 DE



123/124 DE



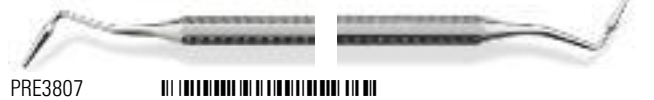
127/128 DE



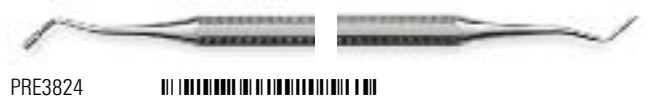
PLUGGERS

Hollenback

Mortonson 2 Smooth

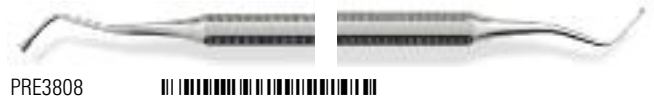


Marquette Smooth DE



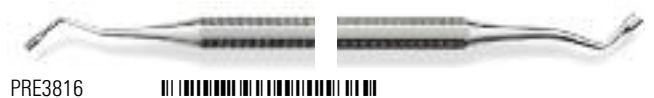
Ward

1 Smooth

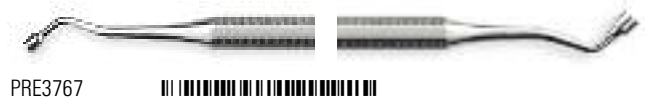


Black

1/2 Smooth DE



Black 2/3 Serrated

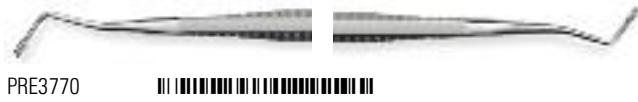


PLUGGERS

Breddal

Condensation pressure is directed to gingival and occlusal areas not angulated towards the matrix bands. This is especially important when the operator is seated, because the dentist does not have to contort with the instruments to achieve packing thrust.

Breddal 5 Serrated



Breddal 6 Serrated



Breddal 2 Smooth

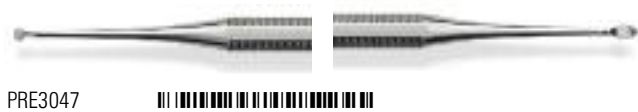


CARVERS

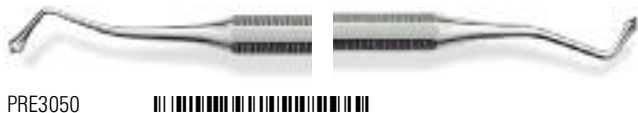
Discoïd/Cleoid Large



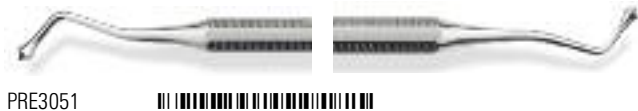
Discoïd/Cleoid 5 C DE



Acorn Carver #21



Acorn 21B DE



Hollenback 3 DE



CARVERS

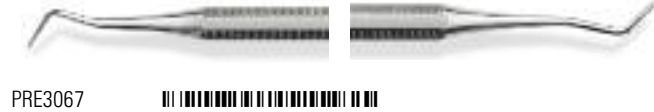
Hollenback 3S½ DE



Ward 2

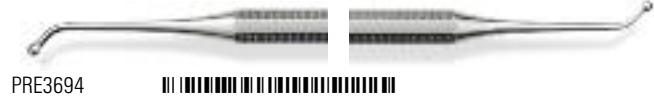


Interproximal Walls 3

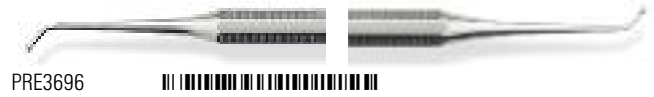


BURNISHERS

25/26 (PFI 13A)



26/27S (PFI S Ball)



26/27S



27/29



28/29



PLASTIC FILLING INSTRUMENTS

Woodson

156 DE



PRE3737



13 DE



PRE3693



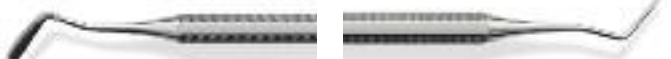
IPP A DE



PRE3697



Gregg 2/3 DE



PRE3706



Ladmore

S1 DE



PRE3715



S6 DE



PRE3720



COMPOSITE FILLING INSTRUMENTS

PREMIER

The black anodized aluminium surface eliminates composite sticking and does not abrade to discolour the restoration

CMI-2



PRE3895



CMI-3

1.85



PRE3896



CMI-4

1.80



PRE3897



CMI-5

1.15



PRE3898



APPLICATORS

Cement Applicator



PRE3115



Cement Placement 1



PRE4398



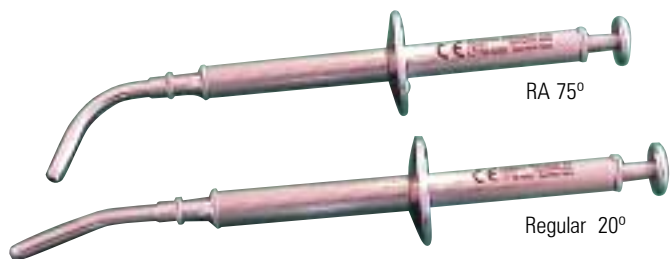
Applicator for Calcium Hydroxide



PRE4397



AMALGAM CARRIERS

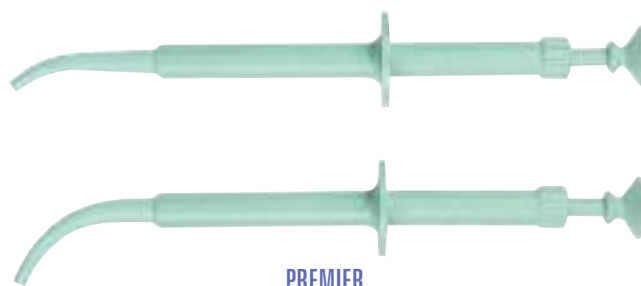


PD

Stainless steel and autoclavable, with interchangeable heads.

Duo RA PDAGDRA	
Duo Regular PDAGDST	
Duo Gun Spring Only PDAGDSPRING	
Duo Gun Interior Stem & Spring PDAGDSSSET	
Duo Gun Head Nozzle Only PDAGDHNRA	
Duo Gun Straight Head Nozzle Only PDAGDHNSTR	

AMALGAM CARRIERS



PREMIER

Fully Autoclavable with removeable parts for cleaning.

Straight PRE62001	
RA PRE62006	
Nose Tip Straight PRE62011	
Nose Tip RA PRE62013	
Plunger Straight PRE62015	
Plunger RA PRE62017	

CORD PACKERS

Round, Straight, Smooth



PRE4405

Fischer's Ultrapack Packer



Regular  
ULT0170

Small  
ULT0171

CROWN REMOVER



Crown Remover Morrell with 2 Tips  
- Hammer, Handle, Points


PRE3151 

CEMENT SPATULAS



PRE4366 



PRE4368 



PRE4369 

WAX KNIVES



SAF2067/16 



SW04510 



SW04512 



SW04517 

WAX SPATULAS



PRE4375 



PRE4380 

S/S DE Round End Fig 8

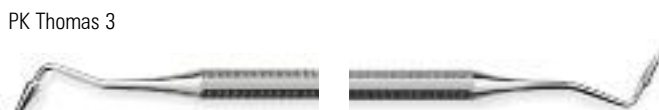


SW04340 

WAX INSTRUMENTS



PRE4382 



PRE4385 

WAX CARVERS



PRE3083 



SW04444 



PRE3088 

PLASTER KNIFE

Gritman



SAF1997



PUNCHES & FORCEPS



Ainsworth Punches

SW03550



Ivory Punches

SW03552



Stoke Style Forceps

SW03555



Brewer Style Forceps

SW03557



ENDODONTIC EXPLORERS

Root Canal Explorer # 23 DE



PRE3846



Root Canal Finder # 2 DE



PRE3849



31 L DE



PRE3883



Root Canal Explorer # 16 DE



PRE3844



EXCAVATORS

31 LS Spoon DE



PRE3841



GLICKS

Glick 1



PRE3850



Glick 2 DE



PRE3842



SPREADERS

25 SE



PRE3868



25S SE



PRE3869



D11T SE



PRE3872



D11 SE



PRE3879



**NiTi SPREADERS**

The physical properties of Ni-Ti allow these spreaders to negotiate even the most curved canals without distorting.

Ni Ti D11



PRE3905



Ni Ti D11T SE



PRE3906



**PREMIER – PLUGGERS**

10S SE



PRE3856



5/7 DE



PRE3863



9/11 DE



PRE3864



NC5/7 DE



PRE3881



NC9/11 DE



PRE3882



**PREMIER – PLUGGERS**

# 9 SE



PRE3853



9S SE



PRE3854



10 SE



PRE3855



**VDW – MACHTOU PLUGGERS**



Stainless Steel, Size 1-2 ANT1002



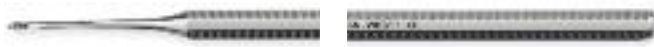
Stainless Steel, Size 3-4 ANT3004



NiTi, Size 40 ANT 04106300040

EJECTORS

West Root 1



PRE3344



West Root 2



PRE3345



West Root 3



PRE3346



TONGUE DEPRESSOR



Tongue Depressor  
SWORD

Buchwald 2334

SW02334



SWORD – HAEMOSTATIC

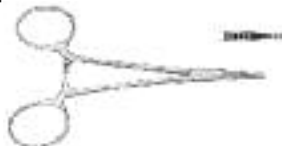
Kelly Curved 14cm



SW01249



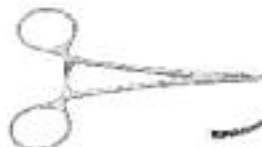
Straight Haist Mosq



SW01254



Haist-Mosq Curved



SW01255



ELEVATORS

Periosteal Elevator #9



PRE3661



Periosteal Molt 1400



SW01400



Periosteal Molt 1407



SW01407



Periosteal Freer 1408



SW01408



Warwick James



SW0804/1



Warwick James L2



SW0804/2



Warwick James R3



SW0804/3



Root Cryer Left



SW0835/1



Root Cryer Right



SW0835/2



30 Cryer Medium



PRE3400



ELEVATORS

31 Cryer Medium



PRE3401



39 Cryer Medium



PRE3376



40 Cryer Medium



PRE3377



79 Apical Picks Medium



PRE3385



80 Apical Picks Medium



PRE3386



79S



PRE3353



302B Apical pointed medium handle



PRE3361



304B Apical pointed medium handle



PRE3363



Apical Pointed large



PRE3357



3 Seldin large



PRE3367



1 Coupland



PRE3397



2 Coupland



PRE3398



3 Coupland



PRE3399



FORCEPS

Upper Central

SAF290-01



Upper Bicuspid

SAF290-07



Lower Inc/Can



SAF290-13



Upper Molar Right



SAF290-17



Upper Molar Left



SAF290-18



Lower Molar



SAF290-22



**FORCEPS**

Lower Molar

SAF290-73 

Lower Wisdom

SAF290-79 

Lower Canine/Bicuspid

SAF290-75 

Upper Roots 290-51A

SAF291-51A 

67A Upper Wisdoms

SAF291-67A 

Lower Roots

SAF291-74N 

Lower Molar

SAF291-86A 



**NEEDLE HOLDERS**


Crile-Wood 15cm



SW02012 

Mayo-Hegar



SW02016/16 

**SCISSORS**

Gum Straight 1



PRE65106 

Gum Straight 10.5 cm

SAF621 

Gum Curved 10.5 cm

SAF622 

Gum Curved 11 cm

SAF626 

Gum Straight 12 cm

SAF627 

Crown Curved

SAF811 



Gum, Straight 11.5cm



SW01110 

Gum, Straight 16cm Kelly



SW01142 

# NON-VENEERED, SINGLE-PIECE ALL-CERAMIC CROWNS & BRIDGES

## ZENOSTAR



**An economical and biocompatible replacement for metallic restorations, especially those made from non-precious metals.**

- Highly translucent, biocompatible zirconium oxide
- 16 shades available
- Precisely defined sintering process ensures best possible fit
- Low abrasion to opposing dentition
- No discolouration at gingival margin – unlike some PFM restorations
- No veneering necessary – economical & fast turn around
- Backed by extensive R&D support from Wieland Dental & Technik Germany



**ZENOTEC®**

To locate your nearest Zenostar Lab, contact your Gunz Laboratory representative.

phone: 0800 30 10 10

fax: 0800 486 9336

[www.gunz.co.nz](http://www.gunz.co.nz)